

Beach Road, Start Precinct



Cnr of Beach Rd & Fritz Sonnenberg

Spare panels to be setup after 21km start



Granger Bay Blvd (Zoomed out)



Granger Bay Blvd, Bus stop & Circle (Zoomed in)



Granger Bay Blvd, Entrance of Athletics Stadium (Zoomed in)



Crn of Granger Bay Blvd & Fritz Sonnenberg (Zoomed in)



Fence to be placed between the 2 x islands on Granger Bay Blvd then moved to the pavement after the 21km runners have passed.

Underpass & Forecourt, Green Point



Fence line must follow pillars.
Leave gap open for Park Run

5km

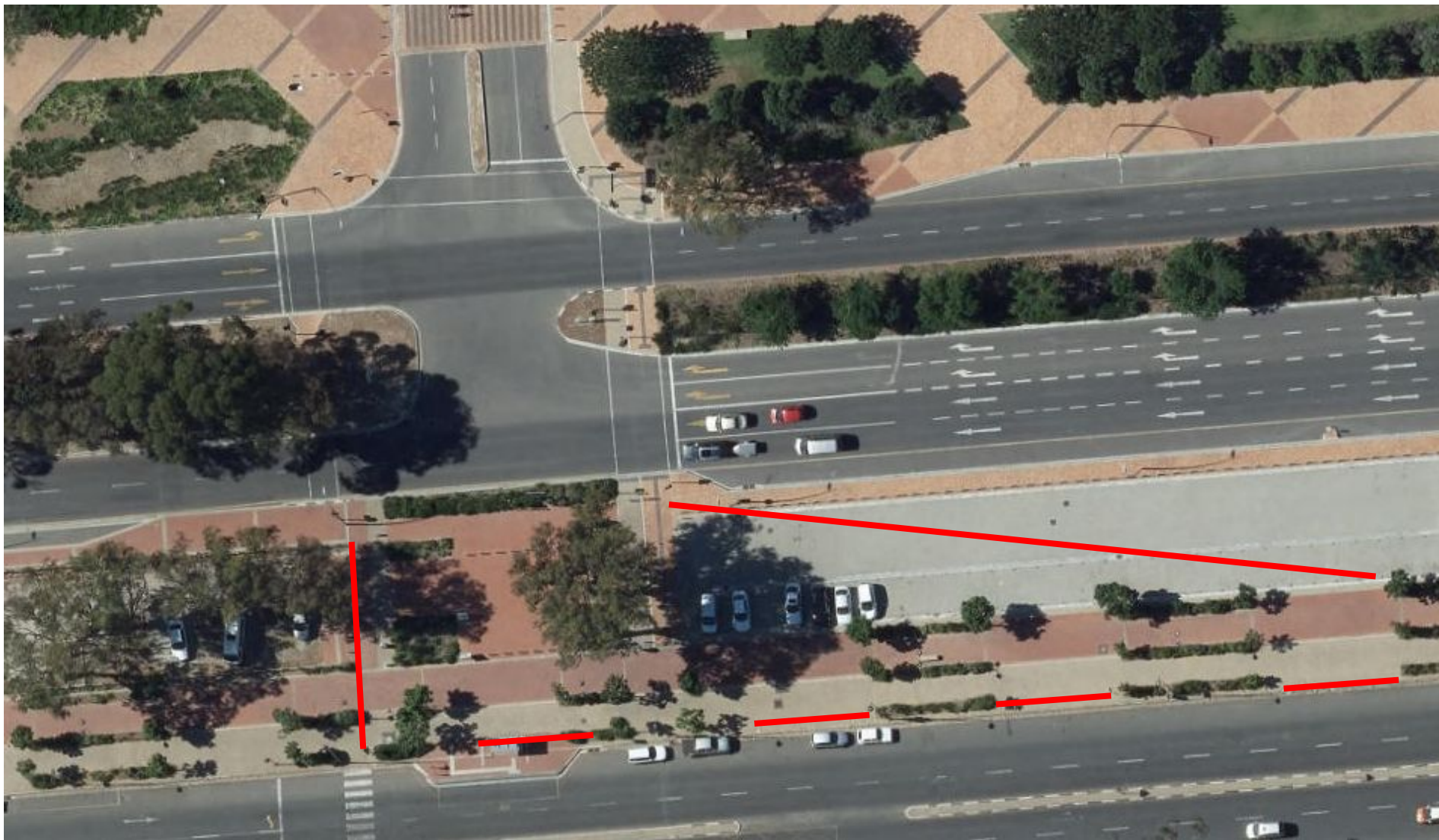
5km & 21km

21km

Top of circle 10km cones



Fan Walk onto Helen Suzman, Green Point



5 KM finish Fencing



On pavement of Beach rd & Beach rd intersection



On pavement of Beach rd & Rocklands rd intersection

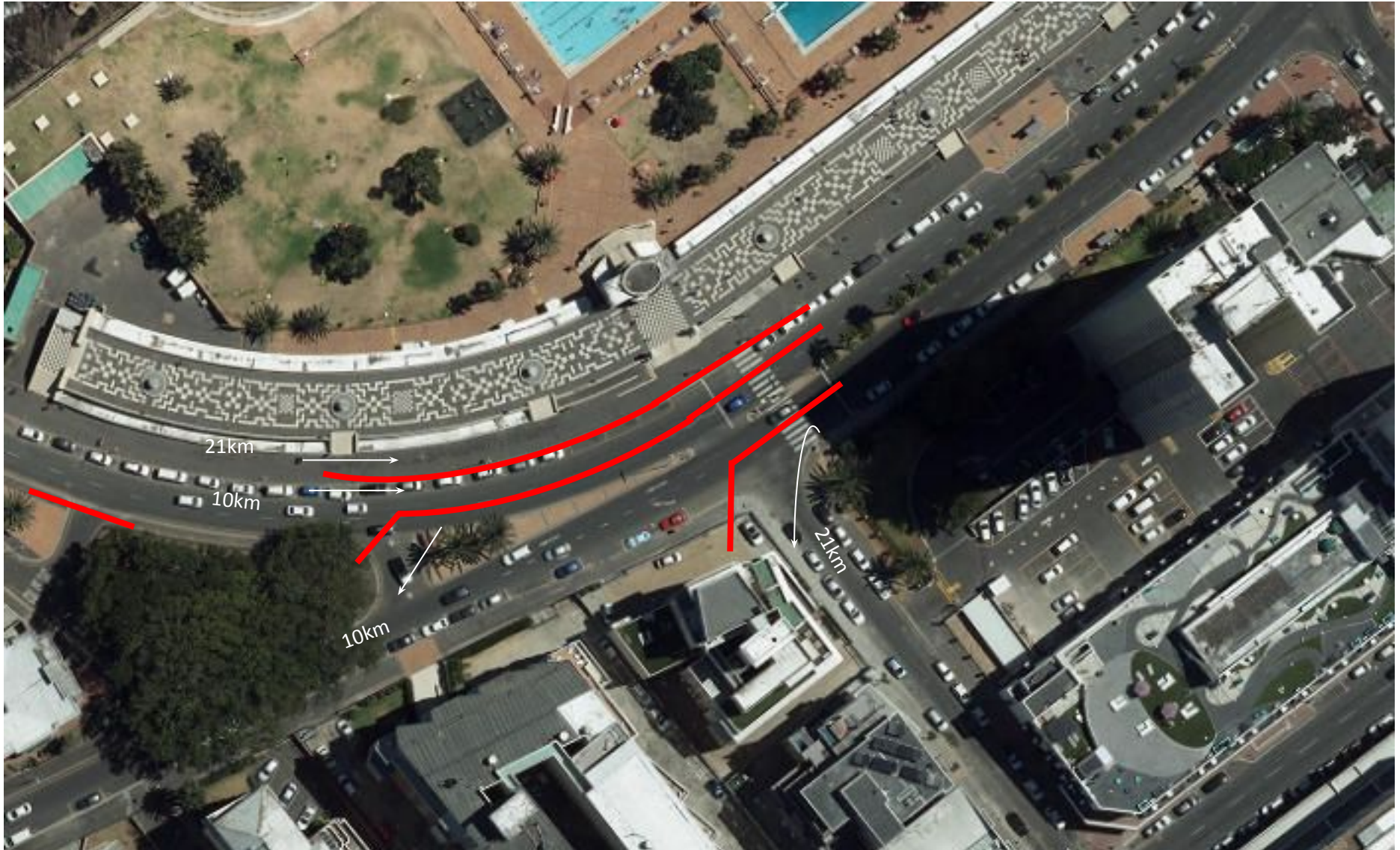
Fence panels to direct runners onto promenade pending completion of construction.



On pavement at food vendors



Clarens Rd 21km & 10km Split



Directing 21km runners onto the promenade



Cones on the road centre line from the end of fence from Queens circle until split



Queens Circle 21km & 10km Turn around



Kloof Rd, Parking lot fencing

